

My Portfolio and Testimonials

Wednesday, March 9, 2022

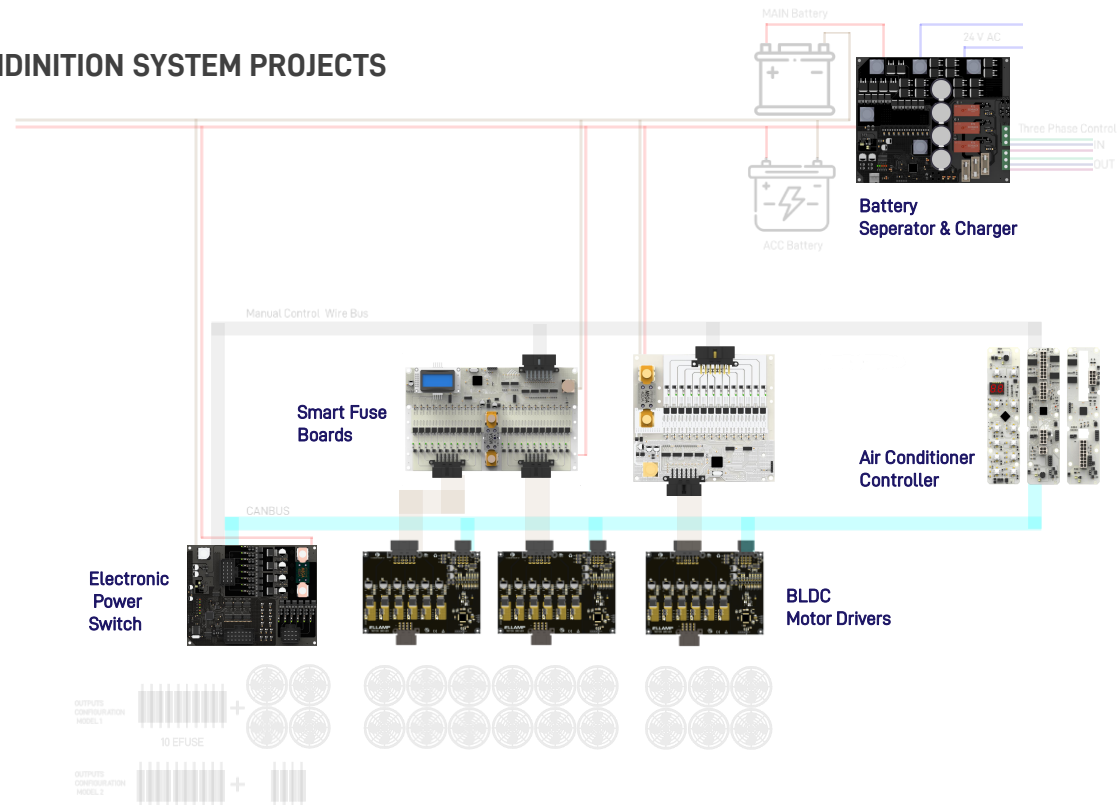
I have been working actively in companies that try to implement R&D in the electronics industry for more than 15 years. I share with you some of the projects he has done below. Kind regards.

Sadık SÜME

My Projects in the Automotive Industry

Wednesday, March 9, 2022

BUS OR TRACK AIR CONDITION SYSTEM PROJECTS

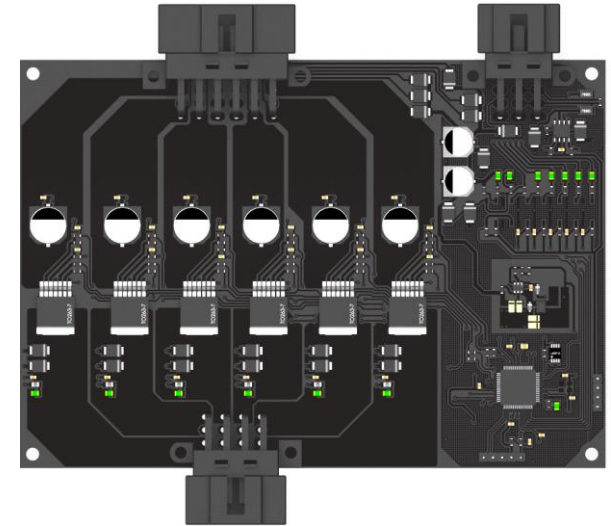


My Projects in the Automotive Industry

Wednesday, March 9, 2022

BLDC Motor Driver Features

- Operating Voltage 9-32VDC
- Automotive Standards AEQ100 compatibility
- 30A output per channel
- CANBUS Communication
- Short Circuit Protection
- Over Temperature Protection
- Outputs for Led Indicator
- 16 Bit MCU Controller

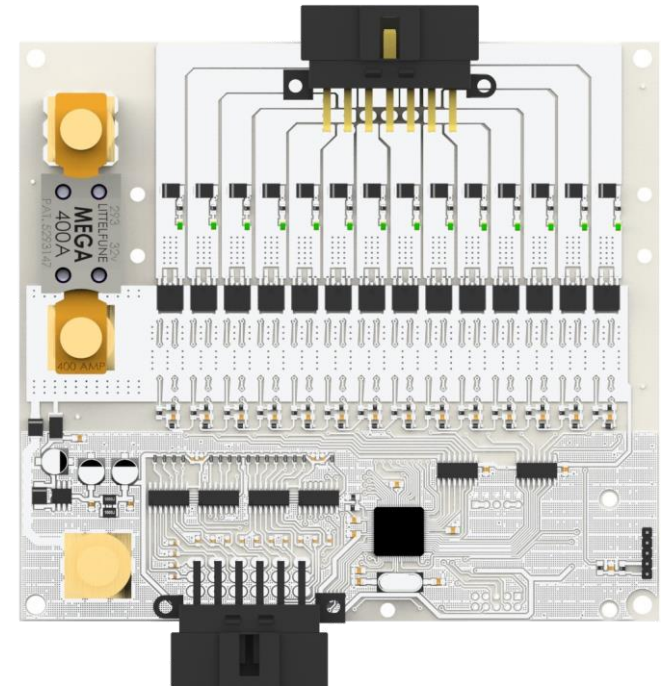


My Projects in the Automotive Industry

Wednesday, March 9, 2022

Smart Fuse Board 14 Ch Features

- Operating Voltage 9-32VDC
- Automotive Standarts AEQ100 compatibility
- 33A output per channel
- 14 Ch Fuse outputs
- Fuse values can be changed automatically by software change
- CANBUS Communaciton
- Short Circuit Protection
- Over Temperature Protection
- Outputs for Led Indicator
- Optional LCD indicator
- Optional WIFI Control
- Optional BLE Control

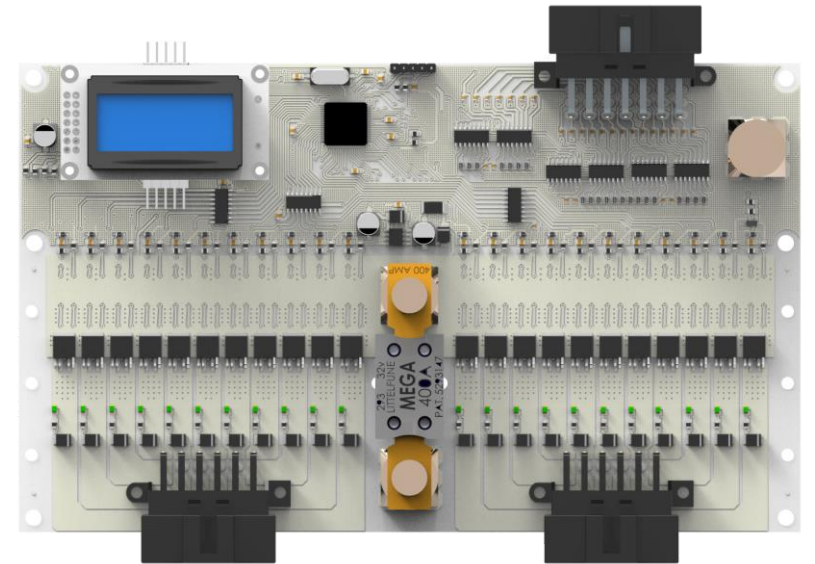


My Projects in the Automotive Industry

Wednesday, March 9, 2022

Smart Fuse Board 22Ch Features

- Operating Voltage 9-32VDC
- Automotive Standarts AEQ100 compatibility
- 33A output per channel
- 22 Ch Fuse outputs
- Fuse values can be changed automatically by software change
- CANBUS Communaciton
- Short Circuit Protection
- Over Temperature Protection
- Outputs for Led Indicator
- Optional LCD indicator
- Optional WIFI Control
- Optional BLE Control



My Projects in the Automotive Industry

Wednesday, March 9, 2022

Smart Fuse Boards Interface Program

ELLAMP PSW INTERFACE V1.0

ELLAMP

Serial Number: **RESET**

Title: **WRITE**

Port:

Const: 24.0 % (0.0 - 25)

D. Time: 50 ms (0 - 100)

P3 INPUT

P3 INPUT CONN

P1 OUTPUT

P2 OUTPUT

P1 CONN. VALUES (A)

P2 CONN. VALUES (A)

button1

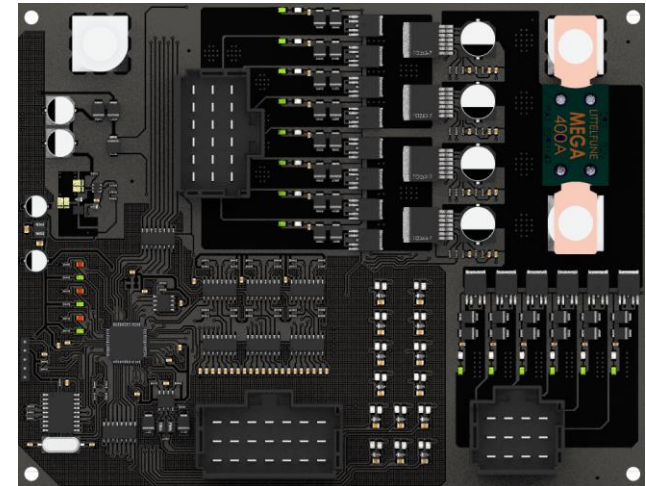
PSW STOPPED

My Projects in the Automotive Industry

Wednesday, March 9, 2022

Electronic Power Switch Features

- Operating Voltage 9-32VDC
- Automotive Standards AEQ100 compatibility
- 33A output per channel
- 22 Ch Fuse outputs
- Fuse values can be changed automatically by software change
- CANBUS Communication
- Short Circuit Protection
- Over Temperature Protection
- Outputs for Led Indicator
- Optional LCD indicator
- Optional WIFI Control
- Optional BLE Control

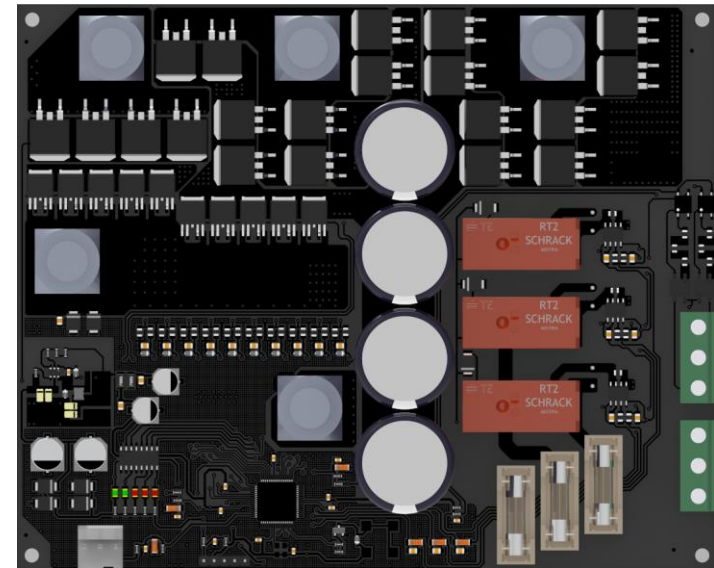


My Projects in the Automotive Industry

Wednesday, March 9, 2022

Electronic Battery Separator Features

- Operating Voltage 9-32VDC
- Automotive Standards AEQ100 compatibility
- 380V Output Control
- Accumulator Charging Control
- CANBUS Communication
- Short Circuit Protection
- Over Temperature Protection
- Outputs for Led Indicator
- Optional LCD indicator
- Optional WIFI Control
- Optional BLE Control

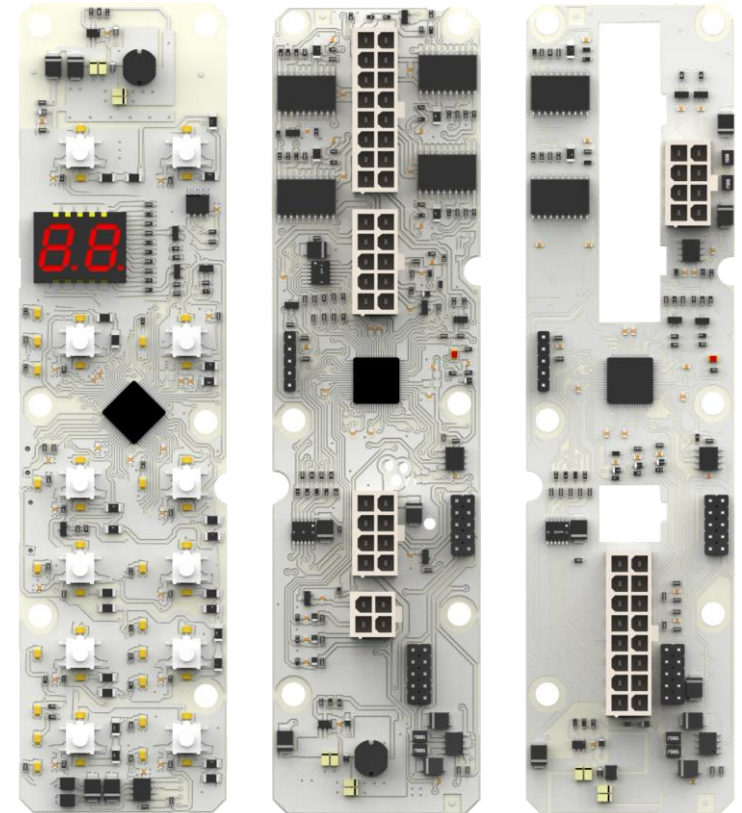


My Projects in the Automotive Industry

Wednesday, March 9, 2022

Air Condiniton Control Board Features

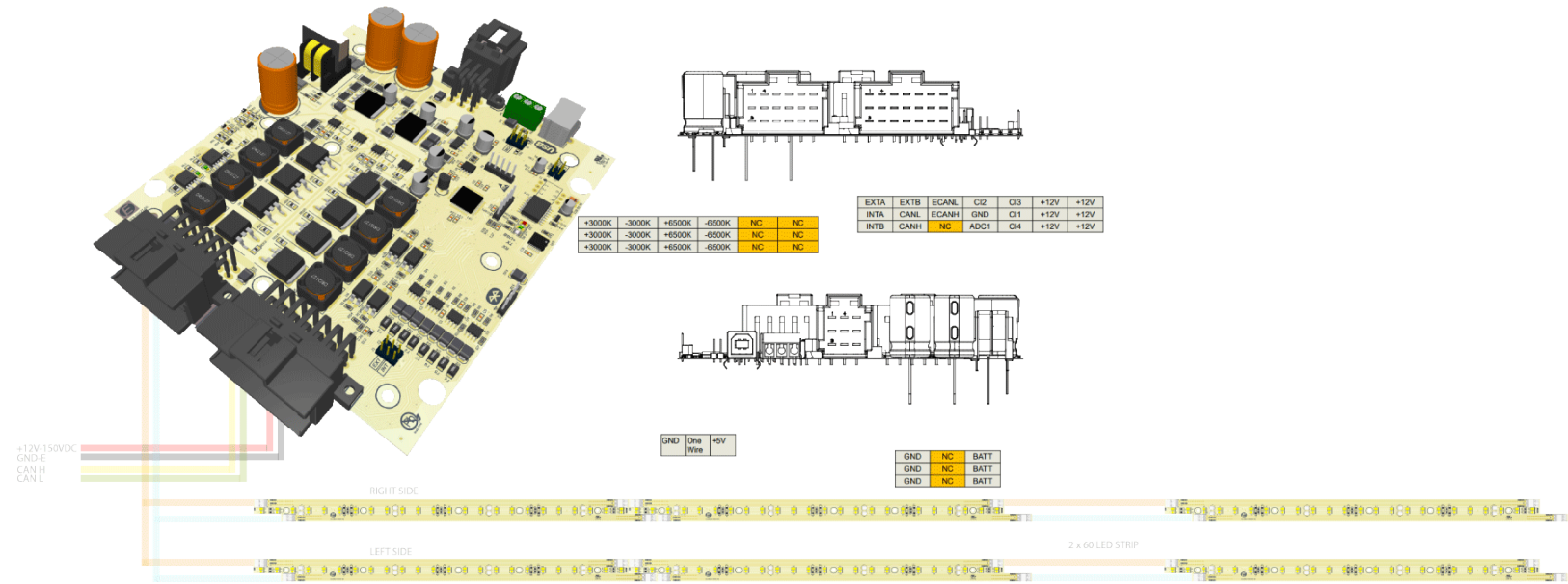
- Operating Voltage 9-32VDC
- Automotive Standarts AEQ100 compatibility
- CANBUS and Directly Control
- 6 Ch Electronic Valf Cotrol
- CANBUS Communaciton
- Event Log Data Record features with then CANBUS
- Brusless Motor Control Outputs
- Smart Air Condinition Control System for BUS
- Short Circuit Protection
- Over Temperature Protection
- Outputs for Led Indicator
- Optional WIFI Control
- Optional BLE Control



My Projects in the Automotive Industry

Wednesday, March 9, 2022

Intelligent Lighting Controller Projects

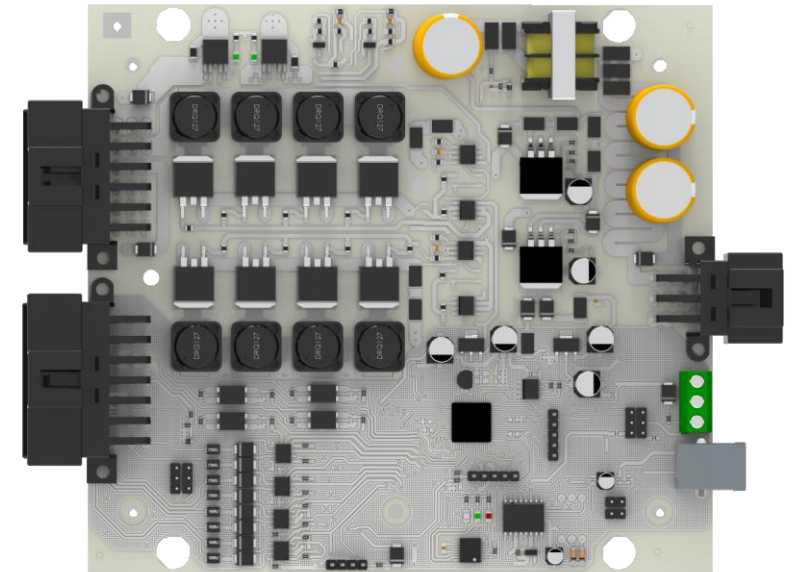


My Projects in the Automotive Industry

Wednesday, March 9, 2022

Intelligent Lighting Control Board

- Operating Voltage 9-32VDC
- Automotive Standards AEQ100 compatibility
- Mobil Application and CANBUS Control
- 2 Ch Electronic Led Driver
- CANBUS Communaciton
- Event Log Data Record features with then Mobil Application and CANBUS
- 20A Power Outputs
- Smart Air Condinition Control System with compatibility
- Short Circuit Protection
- Over Temperature Protection
- Outputs for Led Indicator
- WIFI Control
- BLE Control

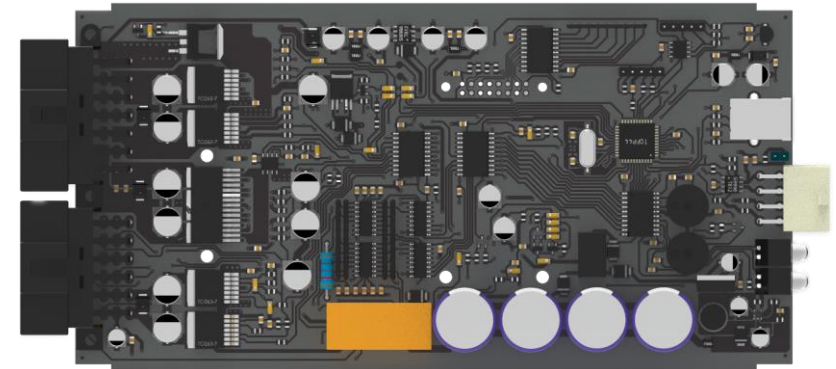


My Projects in the Automotive Industry

Wednesday, March 9, 2022

MINIBUS DOOR CONTROLLER BOARD

- Operating Voltage 9-32VDC
- Automotive Standards AEQ100 compatibility
- Mobil Application and CANBUS Control
- 3 Ch Motor Driver
- CANBUS Communaciton
- Event Log Data Record features with then Mobil Application and CANBUS
- 60A Power Outputs
- Short Circuit Protection
- Over Temperature Protection
- Outputs for Led Indicator
- WIFI Control
- BLE Control
- USB Configutration Set



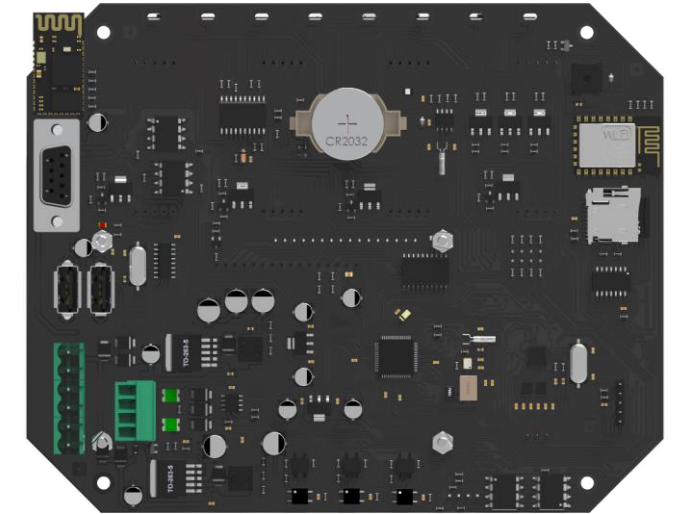
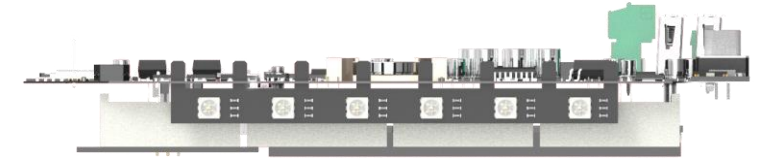
My Projects in the RF ID Projects

Wednesday, March 9, 2022

COUNTER WITH WIFI CONTROLLER (Operator Efficiency Meter)

- Operating Voltage 9-32VDC
- Industrial Standart with compatibility
- Mobil Application and WIFI Control
- 433 Mhz RF Communacation
- CANBUS and MODBUS Communaciton
- 2 Channel USB input Output HID
- Real Time Clock Applications
- RGB Indicator
- 32 bit MCU Controller

- SD Card
- Internal Temperature and Moisture Sensor
- ISO14443 RF ID Reader



My Projects in the RF ID Projects

Wednesday, March 9, 2022

BLE DOORLOCK CD (For Hotels)

- Operating Voltage 6VDC
- Industrial Standart with compatibility
- Mobil Application Control
- Real Time Clock Applications
- RGB Indicator
- 8 bit MCU Controller
- ISO14443 RF ID Reader



My Projects in the RF ID Projects

Wednesday, March 9, 2022

OTHER RFID AND BLE DOORLOCK (For Hotels)

- Operating Voltage 6VDC
- Industrial Standart with compatibility
- Mobil Application Control
- Real Time Clock Applications
- RGB Indicator
- 8 bit MCU Controller
- ISO14443 RF ID Reader

